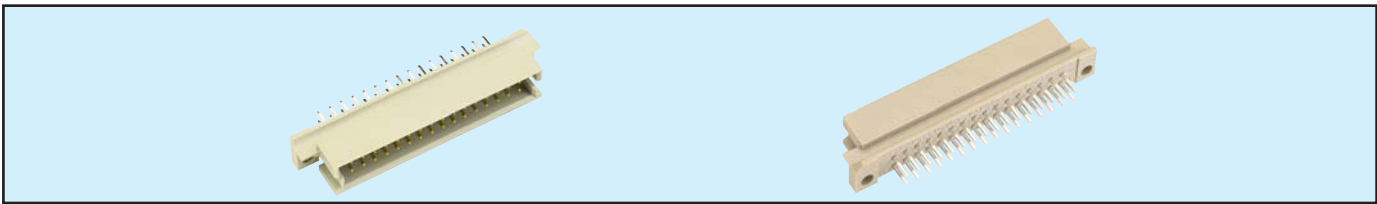
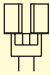
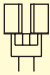
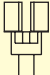
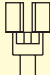
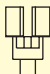


Male Style 1/2 Q



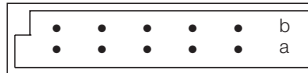
Series 8477 – 2 rows (2 x 16) Inverted



| Contact Design and Termination Length | Number of Contacts | Loading Description | Part Number Performance classes according to DIN 41612 | |
|--|--------------------|-----------------------|--|---------------------|
| | | | II | I |
| 2.9 mm (Y) Straight  | 32 | a + b fully loaded | 10 8477 032 001 025 | 10 8477 032 001 049 |
| | 16 | a + b even loading | 10 8477 032 001 031 | 10 8477 032 001 055 |
| | 16 | a loading only | 10 8477 032 001 027 | 10 8477 032 001 051 |
| | 30 + 2 | fully loaded + ground | 10 8477 032 101 025 | 10 8477 032 101 049 |
| 4.5 mm (Y) Straight  | 32 | a + b fully loaded | 10 8477 032 002 025 | 10 8477 032 002 049 |
| | 16 | a + b even loading | 10 8477 032 002 031 | 10 8477 032 002 055 |
| | 16 | a loading only | 10 8477 032 002 027 | 10 8477 032 002 051 |
| | 30 + 2 | fully loaded + ground | 10 8477 032 102 025 | 10 8477 032 102 049 |
| 9.5 mm (Y) Straight  | 32 | a + b fully loaded | 10 8477 032 005 025 | 10 8477 032 005 049 |
| | 16 | a + b even loading | 10 8477 032 005 031 | 10 8477 032 005 055 |
| | 16 | a loading only | 10 8477 032 005 027 | 10 8477 032 005 051 |
| 13.0 mm (Y) Straight  | 32 | a + b fully loaded | 10 8477 032 006 025 | 10 8477 032 006 049 |
| | 16 | a + b even loading | 10 8477 032 006 031 | 10 8477 032 006 055 |
| | 16 | a loading only | 10 8477 032 006 027 | 10 8477 032 006 051 |
| 14.9 mm (Y) Straight  | 32 | a + b fully loaded | 10 8477 032 007 025 | 10 8477 032 007 049 |
| | 16 | a + b even loading | 10 8477 032 007 031 | 10 8477 032 007 055 |
| | 16 | a loading only | 10 8477 032 007 027 | 10 8477 032 007 051 |

NB: Alternative Prefix Variations Available: 12, 14, 15, 16 & 17, please refer to Page 10.
Additional Plating & Loading Variations: Please contact your local AVX sales office or distributor.

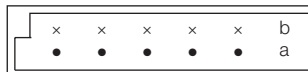
LOADING DESCRIPTION



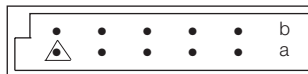
32 contacts, rows a + b fully loaded



16 contacts, rows a + b even loading



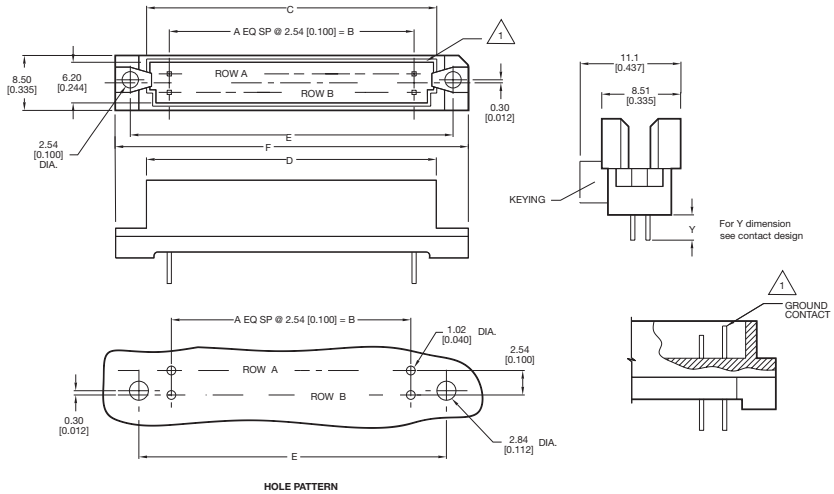
16 contacts, row a loading only



30 + 2 contacts, fully loaded with ground in A1 & A16

△ denotes ground pin

DIMENSIONS



Unit: millimeters (inches)

| No. Contact Positions | Contact Rows | A | B | C | D | E | F |
|-----------------------|--------------|----|------------------|------------------|------------------|------------------|------------------|
| 32 | 2 (2 x 16) | 15 | 38.10 (1.500) | 44.70 (1.760) | 47.29 (1.862) | 49.99 (1.968) | 54.91 (2.162) |